

MONTHLY MEMBERSHIP PROGRESS REPORT

LOCATION MICHIGAN

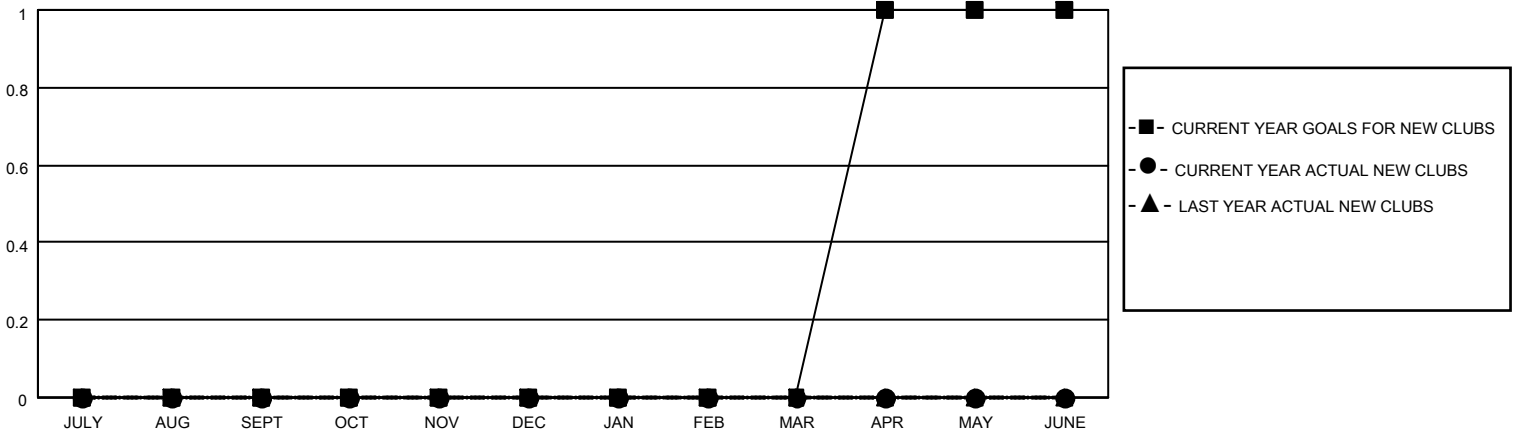
District 11 E1

Results as of: 5/31/2022

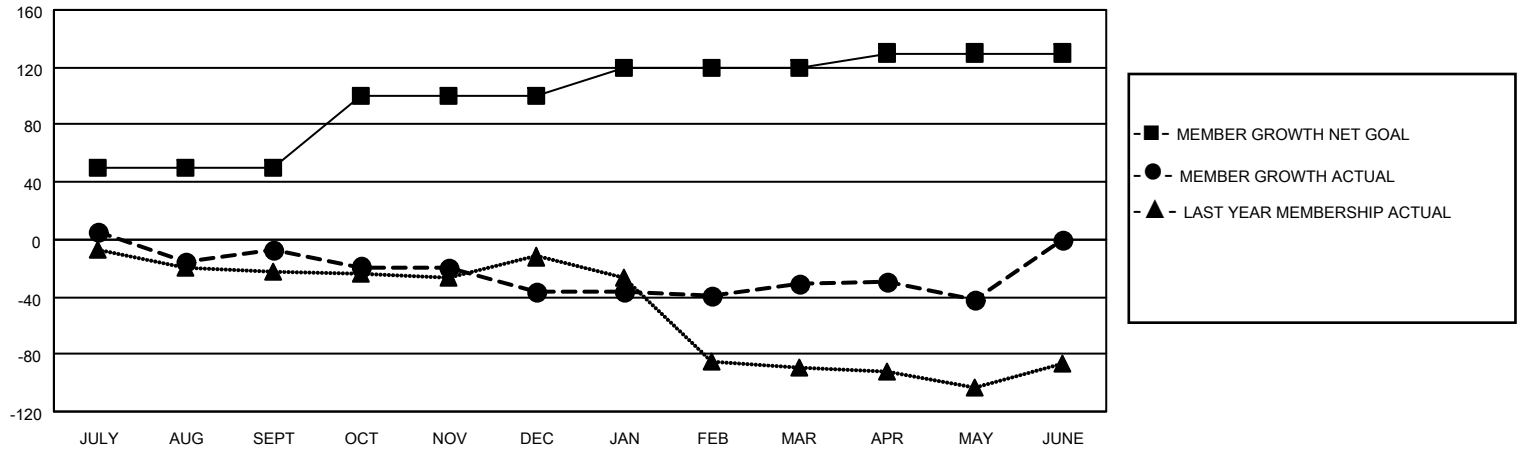
Clubs			
RESULTS FOR 2021-2022			
QUARTER	NEW CLUB GOAL	NEW CLUBS	DROPPED CLUBS
JULY/AUG/SEPT	0	0	2
OCT/NOV/DEC	0	0	0
JAN/FEB/MAR	0	0	0
APR/MAY/JUNE	1	0	0

Members			
RESULTS FOR 2021-2022			
QUARTER	MEMBER GROWTH NET GOAL	MEMBER GROWTH ACTUAL	DROPPED MEMBERS ACTUAL (including transfers)
JULY/AUG/SEPT	50	83	38
OCT/NOV/DEC	50	30	51
JAN/FEB/MAR	20	22	16
APR/MAY/JUNE	10	23	31

GOALS AND ACTUAL NEW CLUBS CUMULATIVE



GOALS AND ACTUAL MEMBERS CUMULATIVE



DROPPED CLUBS: 2	
<u>DROPPED MEMBERS</u>	
DECEASED	30
CLUB CANCELLED	27
OTHER	79
TOTAL	136

29 CLUBS OF 39 ADDED 1 OR MORE NEW MEMBERS

[CLICK HERE FOR CUMULATIVE MEMBERSHIP DATA](#)

<u>GENDER DISTRIBUTION</u>	
MALE	609 (64.31%)
FEMALE	338 (35.69%)
NON BINARY	0 (0.00%)
PREFER NOT TO ANSWER	0 (0.00%)
TOTAL FAMILY UNIT MEMBERS	274
FAMILY MEMBERS PAYING HALF DUES	139